

The Right Move



English Chess Federation—Junior Chess Magazine
director.juniorchess@englishchess.org.uk

2008
NOV.



IM Jovanka Houska and Callum Kilpatrick

TRAINING FOR VIETNAM!?

Under 11 Visit to Flanders 2008

This year we could genuinely say this was an English Primary Schools' team (by a few hours) as the visit was 30th – 31st August. The usual team of 20 (number not players) assembled at St Pancras International coming from all over the country.

This was Peter Batchelor, James Bowler, Henry Broadley, Nicholas Clanchy, Eugene Daley, Miles Edwards-Wright, Chantelle Foster, Felix Haxby, Amy Hoare, Radha Jain, Joseph Levene, Jacob Manton, Ram Mohan, Shyam Mohan, Gautham Reddiar, Isaac Sanders, Adam Taylor, Milo Thrumble and Roy Zhang. Joshua Cavendish was staying at Antwerp and met us at Brussels Midi.

We were met at the station by our hosts and taken to Strombeek Culture Centre where we were to play the match. After the customary speeches the match commenced. The Flemish team was much younger than last year and suffered in the openings but they fought back well in the middle game and actually won the top ten boards 5½-4½. Our strength in depth told lower down and we triumphed 7½-2½ giving us a 12-8 overall lead.

After a short break we started the second round and, again, the early games went our way. However the higher boards were not having it their own way and, in fact, we went down 7-3 on the top ten. Interestingly each round was played with all white or all black and in each case the team with black won! From leading 19-13 it came down to 19½-18½ but a win for Adam and a draw for Eugene saw us home 21-19 in yet another really close encounter.

The players then went to their billets and the staff went for a meal and tour of Brussels. Sunday morning we assembled for the rapid play tournament 15 minutes each. Owing to computer problems we did manual draws to maximise Flemish v English pairings. The Flemish had brought in 11 reserves for experience whilst 3 of yesterday's team were unavailable. This gave us 48 until lunch time when 10 Flemings had to leave for their club training session. After 4 rounds James and Eugene were on 4 with Isaac and Thibault Real on 3; as they had drawn both had to play down. Thibault won his downfloat, Isaac drew his and Eugene beat James. This meant that Eugene on 5 played Thibault on 4. They drew giving Eugene the title. It also meant that with 6 points he got the trophy as the best English player.

After the prize giving we were taken back to Brussels Zuid and did a little present buying before boarding our train home. We got to Lille and disaster struck – a door wouldn't close so they had to send for another train which, in all, put us 130 minutes late! It was bad for us for, although we could sit on the train most of the time the lights were off and so was the air conditioning. Eventually a new train arrived but with no buffet so it was a great relief to arrive back in St Pancras where our poor parents had been waiting over 2 hours. At least we had managed to contact them from Lille to warn them. We look forward to the return visit next year where we might even have U14 and U16 players as well.

Peter Purland



EDITOR'S FOREWORD AND BASIC ADVICE

by Andrew Martin
International Master

Welcome to the November Edition of *The Right Move*. Remember this magazine is here to help YOU. We need your GAMES (with notes preferably), PHOTOS, and NEWS.

Send your contributions to:

a.martin2007@yahoo.co.uk by the 15th of each month. I look forward to receiving them.

The English Squad has departed for Vietnam and the World Junior Championships. A big report next time. Meanwhile we feature some games from our young and talented squad in this month's edition. I hope you enjoy them.

Andrew

CONTENTS	
NOVEMBER 2008	
Under 11 Visit to Flanders	1
From Andrew Martin.....	3
Game of the Month	3
Calling All Under 18s.....	5
The November Prize Puzzle.....	6
Game from Our Readers	7
Witney Chess Club	11
Chess Quiz Page	12
Junior Chess Openings	13
Games of Abigail Pritchard	15
Chess Celebrities Answers	17
Best Quiz Answers	18



N. Payne - E. Goodwin
[C08]

4NCL England, 2008

The games of the average club player are often more instructive than grand-master examples. We see ourselves in these games and can identify with the triumphs and disasters therein.

1.e4 e6 2.d4 d5 3.♘d2 c5 4.exd5 exd5

Quite a rare choice these days, although there is nothing particularly wrong with 4...exd5. White may get a technical edge, but Black has very free piece play.

5.dxc5 ♗xc5 6.♘b3 ♗b6 7.♘f3

7.♗d3 ♘f6 8.♖e2+ ♗e6 9.♘f3 0-0 10.♗e3 ♘c6 11.c3 ♖e8 12.♗xb6 ♖xb6 13.0-0 ♗g4 14.♖d1 a5 15.♖b1 a4 16.♘bd2 d4 17.♖c2 dxc3 1/2-1/2 Petrenko, S-Kononenko, T/Chisinau 2005.

7...♗g4 8.♗e2 ♘e7!

A better square than f6, lest the Knight be awkwardly pinned with a subsequent Bg5.

8...♘c6 9.0-0 ♘ge7 is very simi-

lar: 10.h3 ♕h5 11.♖bd4 ♗xd4 (11...0-0! seems strongest to me: 12.♕e3 ♖d6 13.c3 ♜fe8 Straightforward development is the order of the day, rather than routine captures on d4.) 12.♗xd4 ♕xe2 13.♗xe2 ♖c7 14.♕f4 ♖c5 15.c3 Ortiz Aguirre, N-Garcia Verde, F/Binissalem 2004 White has a small edge, based on Black's isolated d4-pawn.

9.0-0 0-0 10.h3 ♕h5 11.♞e1 ♗bc6 12.♗fd4 ♕xe2 13.♞xe2 ♗g6

Playable alternatives include 13...♞e8 and; 13...♖d6.

14.♕e3 ♞e8 15.♖e1?!

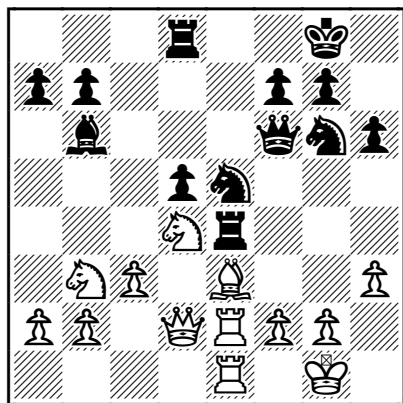
More tricky than anything else. I am doubtful whether taking an eye off d5 can be objectively best.

Thus 15.c3 ♖f6 16.♖d2 ♞e4 17.♞ae1 ♞ae8 remains about level.

15...♖f6! 16.♞d1 ♞ad8

Either Black masses his forces in the centre. 16...♞e4 17.c3 ♞ae8; Or he centralizes, resisting exchanges and eyes c4. 16...♗ce5 Either way, Black is fine.

17.♖d2 h6 18.♞de1 ♞e4 19.c3 ♗ce5

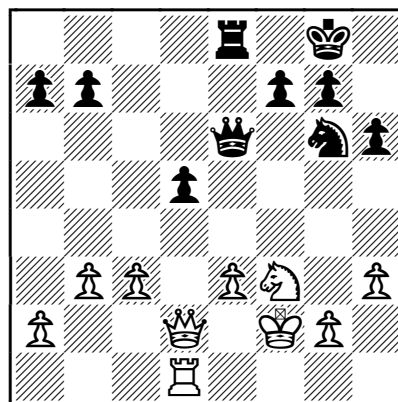


better, but it's difficult to increase this advantage if Black continues to aim for complications.

20.♖c2 ♗c4 21.♗d2 ♗xd2 22.♖xd2 ♗e5 23.b3 ♗g6 24.♗f3 ♕xe3 25.♞xe3 ♞de8 26.♞d1 ♞xe3

Now I think 26...♗f4! was correct, stationing the Knight intimidatingly close to the white King and en passant protecting d5. What Black must not do in a position of this type where he has a single static weakness is to go passive. One has to play actively to offset the structural drawback. 27.♗d4 (27.♗h2 ♖g6 28.♞g1 a6 29.♞xe4 ♞xe4; 27.♞xe4 ♞xe4 28.♞e1 ♗xh3+!) 27...♞8e5! 28.♗h1 a6 29.♞f3 ♗h4 30.♗h2.

27.fxe3 ♖e6 28.♗f2



28...♖b6

Maybe it was again time to activate the Knight: 28...♗e7! 29.♗d4 ♖e5 30.♖d3 a6 31.♗g1 ♗c8 32.♗f3 ♖xe3+ 33.♖xe3 ♞xe3 34.♞xd5 ♞xc3 35.♞d8+ ♗h7 36.♞d7=

29.♖d4 ♖a6 30.♞d2 ♖c6 31.♞d3 ♖a6 32.a4 ♞d8

32...♗e7! intending a more active future for the Rook on c8, was preferable.

33.c4 ♖c6?

33...♗e7 34.♖e5 ♖e6 is still only a

So far Black is playing very well. He has avoided exchanges, keeping the game complex. White might be a touch

fraction better for white: 35. ♖xe6 (35.e4 ♖xe5 36. ♗xe5 d4 37.c5 ♗c6 38. ♗xc6 bxc6 39.b4 a6 40. ♖e2 ♖f8) 35...fxe6 36.e4 ♖f7.

34.cxd5 ♖c2+ 35. ♖g1 ♖b1+ 36. ♖h2 ♗e7

Too late.

37.e4 ♗c6 38. ♖c3 ♗b4 39. ♖d4 ♗a6 40.d6 1-0.

LESSONS TO BE LEARNED:

- 1) Simplified positions demand accuracy.
- 2) With a single static weakness such as an isolated Queen's pawn, look for every opportunity to play actively.
- 3) Black had several possibilities to at least equalize in this game. It looked like he forgot about the Knight on g6!

CALLING ALL UNDER 18s

In Liverpool at the British Championships I met up with Maria Eagle M.P, Parliamentary Under Secretary, Ministry of Justice. She and her twin sister Angela are both government ministers. They were both very keen chessplayers when youngsters. Maria told me the government is considering reducing the Voting age from 18 to 16. She even canvassed the opinions of a couple of 10 year olds there and then.

What is your opinion? You could send it to me and I relay your views on to Maria. Alternatively you can write to her at eaglem@parliament.uk. If you do so, you should start your message: I understand the government is considering lowering the voting age to 16. My opinion is... and give your reasons. Keep it short, politicians have a short attention span. Mention you are a chessplayer.

A chess junior pressure group would be a welcome innovation.

StewartReuben@aol.com



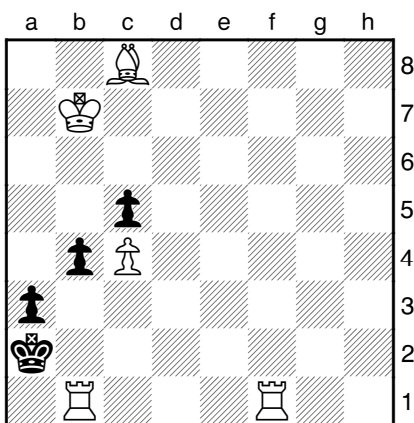
Standing LtoR: Gerry Walsh ECF President and ECF International Director
Stewart Reuben; Seated: MP Maria Eagle and The Lord Mayor of Liverpool

OCTOBER'S PUZZLE SOLUTION

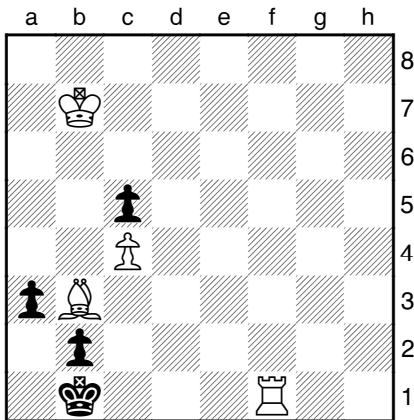
from

Andrew Martin

O von KROBSHOFER 1904 WHITE TO PLAY AND MATE IN FOUR,



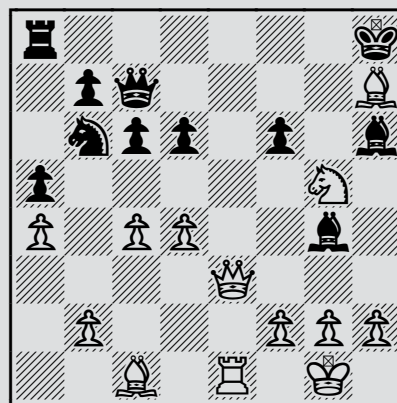
1.c8♙!! A fantastic key move! **1... b3 2.♙g4 b2 3.♙d1!! ♔xb1 4.♙b3#**
 A remarkable little study, where the underpromotion on move one is necessary to avoid stalemate. Try taking a Queen!



NOVEMBER PRIZE PUZZLE

P. Marusenko — D. Logdahl,
Newport

The ability to recognise tactical patterns and act on them is the hallmark of the strong player. Here White has a golden opportunity to win the game. How?



If you feel you have
 some interesting games
 to be put in the pages of
THE RIGHT MOVE,
 be sure to submit them
 to the editor:
Andrew Martin:

a.martin2007@yahoo.co.uk

GAMES FROM OUR READERS

Kilpatrick, C (2203) - Janiashvili, I (2192)

[B42]

U16 Olympiad Mersin TUR, 18.08.2008

After cruising to a 4-0 victory against Albania we had a much harder challenge in the way, Georgia.

1.e4 c5 2.♘f3 e6 3.d4 cxd4 4.♘xd4 a6 5.♙d3 ♗c6 6.♘xc6 dxc6

This line is not so exciting, I had a vague recollection of an old game between Leko and Khalifman which was very instructive.

7.♘d2

Apparently my opponent was new to this move(!) and thought for a while here.

7...e5 8.♗c4 ♙d6?!

8...♙e6. The normal way of things.

9.♙e2

This is the critical reaction.

9...♙c7 10.♖xd8+ ♕xd8 11.♙g5+

11.♙e3! Is stronger as I want my Bishop on e3 anyway 11...♙e6 12.0-0-0+ ♕c8 13.f3±

11...♕e8

The strongest sequence of moves in my opinion, here I had to work fairly hard to set new problems for my opponent.

12.0-0-0 ♙e6 13.f3 ♗f6 14.♙e3 ♗d7 15.♗d6+ ♙xd6 16.♖xd6 ♕e7 17.♖hd1 ♖hd8 18.b3!

Keeping things flexible as well as offering the possibility of Bc4.

18...♗f6 19.♙c5 ♕e8 20.c4 ♗d7 21.♙e3 ♗f6 22.♙c5 ♗d7

This was annoying!

23.♙e3 ♗f6 24.c5 ♖xd6 25.♖xd6

♖d8 26.♖xd8+ ♕xd8 27.♕c2±

White is better but is it enough for the full point?

27...♗d7 28.♙d3

I didn't want to allow anything with f5 but it probably isn't so scary.

28...f6 29.♕c3 g6 30.g3 ♙f7

30...f5?! 31.exf5 gxf5 32.f4 e4 33.♙e2.

31.f4 ♙e6 32.h4 ♕e7 33.f5 ♙f7

33...gxf5 34.exf5 ♙d5 35.g4 e4 36.♙e2 ♗e5 37.♕d4↑ ♗f3+ 38.♙xf3 exf3 39.♙f2± the dark square weaknesses in the Black camp should prove costly.

34.g4 ♕d8 35.♙c4

This looked sensible to me, neither of us had that much time and I was not sure what to do about the K-side situation.

35...♙xc4 36.♕xc4 ♕e7 37.a3 ♕f7 38.♕b4 h5 39.gxh5 gxh5

Now my only chance is on the Q-side.

40.♕a5 ♕e7 41.a4 ♕d8 42.b4 ♕c7 43.b5 axb5 44.axb5 ♗b8

I think this equal but after some lengthy manoeuvring I find a way in.

45.♙h6 ♗d7 46.♙e3 ♗b8 47.♕b4 ♗d7 48.♕c4 ♕c8 49.♙h6 ♕c7 50.♙e3 ♗b8 51.♕b4 ♗d7 52.♙g1 ♗b8 53.♙f2 ♗d7 54.♕a5 ♗b8 55.♙g1 ♗d7 56.♙e3 ♗b8 57.♙h6 ♗d7 58.♕b4 ♗b8?

58...♕c8. Still holds.

59.♙f8 cxb5

After this White can win on the spot but I don't see another defence.

60.♙d6+ ♕c8 61.♙xb8??

I was so close to completing a fine victory. 61.♙xb5!+- ♘c6 (61...♘d7 62.c6) 62.♙b6.

61...♙xb8 62.♙xb5 ♘c7 63.♙b4 ♘d7 64.♙c3 ♘c7 65.♙b3 ♘d8

This was what I had overlooked (that the King opposes mine on d7 when I get to d5).

66.♙c4

66.♙a4!! Even now I can still win! 66...♙d7 67.♙b4 ♘c6 (67...♙d8 68.♙a5 ♘c7 69.♙b5+-) 68.♙c4 ♘d7 (68...♙c7 69.♙b5+-) 69.♙d5 ♘e7 70.c6 b6 71.c7 ♘d7 72.c8♙+ ♘xc8 73.♙e6! (73.♙c6 b5 74.♙xb5 ♙b7=) 73...b5 74.♙xf6 b4 75.♙g6 b3 76.f6 b2 77.f7 b1♙ 78.f8♙+ ♙b7 79.♙e7+ ♙a8 80.♙xe5+- A very attractive continuation, although very hard to see in the limited time available (about 30 seconds!)

66...♙c8 67.♙b4 ♘d7 68.♙b3 ♙c7 69.♙c3 ♘d8 70.♙c4 ♙c8 71.♙b4 ♘d7 72.♙a5 ♙c6 1/2-1/2

An immensely lucky escape by my opponent.

FAVOURITE GAMES

Several players from the English Squad have sent in their games for the Right Move prior to departure for Vietnam. We thank them and showcase the results here.

Matthew, Wadsworth - Peter, Andreev

[E90]

LJCC U12 2007 Rd 9 uk, 30.12.2007

1.e4 g6 2.d4 ♘g7 3.♘f3 d6 4.c4 ♘f6 5.♘c3 0-0 6.♘d3

Could have played Be2 here.

6...♘bd7 7.0-0 c5?

Allows d5 which cramps Black.

8.d5 ♙c7 9.♘d2 a6 10.a4 ♘g4 11.♙c1 ♘ge5 12.♘xe5 ♘xe5 13.♘e2 ♘g4 14.♘xg4 ♘xg4 15.h3 ♘f6 16.♘h6 ♙d7 17.♘xg7 ♙xg7 18.f4 e6

18...Qc7 might have been better.

19.e5 dxe5 20.fxe5 ♘g8 21.d6 f6 22.exf6+ ♘xf6 23.♙d1

Qf4 might have been interesting. 23.♙f4 ♙h8 24.♙e5.

23...♙ad8 24.♙e3 ♙c8

24...Qc6 might have been better.

25.♘e4 ♘xe4 26.♙xe4 ♙c6 27.♙e5+ ♙g8 28.♙d3 ♙d8

28...Rf5 looks better.

29.♙ad1 ♙f8 30.b3 ♙f5 31.♙g3 e5 32.♙d5 ♙h8??

32...Rf8 is much better. 32...♙f8 33.♙xe5 ♙e8 34.♙g5 ♙e6.

33.♙xe5 ♙xd6

If Black doesn't take but plays 33....Rf6, Black loses even more rapidly. 33...♙f6 34.♙e7 ♙d8 35.♙e5 ♙cxd6 (35...♙f8 36.♙e8 ♙g8 37.♙xf8+ ♙xf8 38.d7 ♙d8 39.♙e8+ ♙xe8 40.dxe8♙+ ♙g7 41.♙e7+ ♙h6 42.♙d7 ♙h5 43.g4+ ♙h6 44.♙h4#) 36.♙e8+ ♙xe8 37.♙xe8+ ♙g7 38.♙e7+ ♙h8 39.♙xd6 ♙xd6 40.♙f8#

34.♙xd6

Black can't recapture as 35 Re8+ wins Black's Queen.

34...♙f7 35.♙xf5 ♙xf5 36.♙c3+

Rd8+ might have been quicker. 36.♙d8+ ♙g7 37.♙c7+ ♙f7 38.♙d7.

36...♙g8 37.♙a5 ♙g7 38.♙c7+ ♙h6 39.♙d7 g5 40.♙d6+ ♙h5 41.g4+ ♙xg4+ 42.hxg4+ ♙xg4 43.♙e6+ ♙f4 44.♙f7+ ♙g3 45.♙e3+

Qe4 or Qh6 would have been quicker.

45.♖e4 g4 46.♞xh7 b6 47.♞e3#; 45.♞h6
♔g4 46.♔g2 a5 47.♞h3#

45...♔h4 46.♞e4+ g4 47.♞xh7+ ♔g5
48.♞g7+ ♔f6 49.♞g6+ ♔f7 50.♞e6+
♔f8 51.♞f6+

Should have played Rg8#
51...♔e8 52.♞g7 b5 53.♞e7# 1-0

Vikanis,Georgs - Rabbitte,Liam

[E91]

Challengers A 2008 Salford, 17.08.2008

[Rabbitte,Liam]

1.♟f3 g6 2.d4 ♟g7 3.c4 ♟f6 4.♟c3
d6 5.e4 0-0 6.♟e2 ♟bd7 7.0-0 c5
8.d5 h6 9.♟e1 ♟h7

Just manouvering my pieces round to
create some activity.

10.f4 ♟b6 11.a4 ♟d7 12.e5 h5
13.♟d3 ♟f5 14.♞e1 ♟xc4 15.♟xc5
♟a5

Instead of Na5, Qb6 was better which
puts his Knight under pressure.

16.♟d3 ♟b3 17.♞b1 ♟xc1 18.♞xc1
a6 19.h3 ♞c8 20.g4 hxg4 21.hxg4
♟xd3 22.♟xd3 ♞b6+ 23.♞f2

I think this move was a mistake be-
cause now I can bring my Knight back
into the game.

23...dxe5 24.fxe5 ♟g5 25.♔g2 ♞d4
26.♞e2 ♟xe5 27.♞d1 ♞xc3

This move allowed me to swap pieces
off and win another pawn.

28.bxc3 ♞xd5+ 29.♞f3 ♞xf3+
30.♞xf3 ♟xf3 31.♔xf3 ♟xc3
32.♞b1

I should win the endgame but with
opposite coloured Bishops it's still quite
tricky.

32...b5 33.axb5 axb5 34.♞xb5 ♔g7
35.♞b7 ♟f6 36.♔f4 ♞d8 37.♟e4

♞d4 38.♔e3 ♞a4 39.♔f3 ♟g5
40.♞c7 ♞a3+ 41.♔g2 ♟h4 42.♟f3
f5 43.gxf5 gxf5 44.♟d5 ♞e3 45.♞c8
♔f6 46.♞h8 ♔e5 47.♟f3 ♟f6 48.♞a8
♔f4 49.♞a4+ ♔g5 50.♔f2 ♞b3
51.♞a5 e5 52.♔e2 ♔f4 53.♟d5 ♞b6
54.♟f7 ♟h4 55.♟e8 ♞b2+ 56.♔d3
e4+ 57.♔c3

Allows me to swap Rooks off.

57...♟e1+ 58.♔xb2 ♟xa5 59.♔c2
♔f3 60.♔d1 f4 61.♟b5 ♔f2 62.♟a6
e3 63.♟e2 f3 0-1

This win in the last round of the UK
Chess challenge enabled me to win the
Challenger's section.

Jain,Radha (92) - Dines,Sheila (146)

[E18]

Hastings Weekend Major (4.5), 06.01.2008

[Jain,Akash]

1.d4 ♟f6 2.♟f3 e6 3.c4 b6 4.g3 ♟b7
5.♟g2 ♟e7 6.0-0 0-0 7.♟c3 d6 8.b3
♟e4 9.♟b2 f5 10.d5 ♟xc3 11.♟xc3
e5 12.b4 ♟d7 13.a4

She has got a stupid looking King's
Indian... BREAK WITH C5.

13...♞e8 14.a5 a6 15.axb6 cxb6
16.♟d2 ♞c8 17.♞b3 h6 18.♞fc1 ♞f7
19.♟h1

I was going to play ♟h3, but then I
realised it was really rubbish because of
g5, but I had already touched the ♟.

19...♟f6 20.♟c3 b5 21.cxb5 ♟xd5
22.♞d1 e4 23.♟xf6 ♟xf6 24.♟h4
axb5 25.♟xf5 ♞xc1 26.♞xc1 ♟b3??
27.♞xd6 ♟c4 28.e3 ♔h7 29.♞d4 g6
30.♟d6 ♞e7 31.♟xc4 bxc4 32.♞xc4
♞f7 33.b5 ♟g4 34.♞c2

34.b6.

34...♞d7 35.♟xe4 ♟e5

35...♖d1+ 36.♔g2 ♜xf2+ 37.♔h3
(37.♜xf2 ♚xe3+) 37...♚xe3 38.♞c7+ ♔g8
39.♞c8+ ♜f8 40.♞e6+ ♔h8 41.♞xg6 ♞f1+
42.♞g2 ♞f7 43.♞xh6+ ♔g8 44.♞d2.
36.♞c5 ♖d1+ 37.♔g2 ♚f3 38.♞c1
♚e1+ 39.♔h3 ♞e2 40.♞d5 ♔g8
41.b6 ♞xf2 42.b7 ♞f1+ 43.♔g2
♞xg2+ 44.♞xg2 ♚xg2 45.b8♞+
1-0

Isaac Sanders - Henry Broadley

[B23]

ECF U-11 Ch, 07.10.2008

[BeckyR]

1.e4 c5 2.♚c3 ♚c6 3.♔c4 e6 4.f4
♚ge7 5.d3 d5 6.♔b3 g6 7.♚f3
♔g7 8.0-0 0-0 9.♞e1 a6 10.a4 ♜b8
11.♞h4 b6 12.f5 exf5 13.♚xd5
♚xd5 14.♔xd5 ♚d4 15.♔g5 ♞d7
16.♔f4 ♚e2+ 17.♔h1 ♚xf4 18.♞xf4
♔b7 19.♔xb7 ♜xb7 20.exf5 ♔xb2
21.♞ab1 ♔g7 22.fxg6 hxg6 23.♞c4
a5 24.♞be1 ♜e8 25.♚g5 ♜xe1
26.♞xe1 ♜b8 27.♞f1 ♜f8 28.♞h4
♜e8 29.♞xf7 ♞xf7 30.♚xf7 ♔xf7
31.♔g1 ♔d4+ 32.♔f1 ♔g7 33.♞g3
♜f8+ 34.♔e2 ♜f2+ 35.♔e1 ♜f7
36.c4 ♔f2+ 37.♞xf2 ♜xf2 38.♔xf2
♔f6 39.♔f3 ♔f5 40.h3 g5 41.g3 ♔f6
42.♔e4 ♔e6 43.h4 ♔f6 44.hxg5+

And white wins

Clanchy,N - Birch,Johnny

[E81]

Young Masters Millfield (5), 20.07.2008

[Clanchy,Nicholas]

1.d4 ♚f6 2.c4 g6 3.♚c3 ♔g7 4.e4
d6 5.f3 ♚bd7 6.♚h3 0-0 7.♔g5 c5
8.d5 ♚e5 9.♚f2 a6 10.♞d2 ♚e8
11.♔e2 f5 12.0-0 ♚f7 13.♔e3 ♚c7
14.♚a4 fxe4 15.♚xe4 ♔f5 16.♚b6

♜b8 17.a4 ♚a8 18.♚xa8 ♜xa8
19.a5 ♜b8 20.♞a3 b5 21.cxb5 axb5
22.b4 ♔xe4 23.fxe4 c4 24.♔g4
♚e5 25.♔e6+ ♔h8 26.♞xf8+ ♞xf8
27.♔d4 ♞a8 28.♔xe5 ♔xe5 29.♜f3
♞b8 30.♞h6 ♔g7 31.♞h3 ♞a7+
32.♔f1 ♜f8 33.♞xf8+ ♔xf8 34.♔f7
♔g7 35.♞e6 c3 36.♔g8 ♔h6
37.♞h3+ ♔g7 38.♞xh7+ ♔f6 39.e5+
dxe5 40.h4 ♔g7 41.h5 gxh5 42.♔e6
♔g5 43.♞xg7+ ♔f4 44.g3+ ♔f3
45.♞f7+ ♔e3

45...♔xg3 46.♞g6+ ♔f3 47.♞xh5+
♔e4 48.♞f5+ ♔d4 49.♞f2+
46.♞f2+ ♔d3
46...♔e4 47.♔f5+
47.♔f5+ e4 48.♞xa7 1-0

Junior Events

November • December 2008

British Rapidplay Halifax

Under 11 England Trial Qualifier

Saturday 29th November

Under 16, Under 12 Sunday 30th

November

Any over 11 wishing to qualify for entry to the National Chess Junior Squad should play in the two day Senior section appropriate to their grade.

Entries to **S. Burton**, The Treasurer, 4 Osbourne Court, Back Lane, Bramley, LS13 4BN.

London Junior Championships

Under 14 and Under 10 Saturday\

Sunday December 13 & 14

All other age groups Sunday – Tuesday

28-30 December

Entries to **Marc Shaw**, 3 Greer Road,

Harrow Weald, Middlesex HA3 6JF

This event is part of the John Robinson Grand

Prix which counts towards ECF places in

European Championships etc and the U12 major

is also a qualifier for the England Under 11 trial.

All major events U12 upwards count as qualifiers

for the National Chess Junior Squad.

WITNEY CHESS CLUB BEGINNER'S CHESS TOURNAMENT

Congratulations to Witney Chess Club, who ran their 1st junior tournament on the 11th October at The Kings School in Witney. Due to a huge amount of hard work by members of Witney Chess Club, especially Alan Kennedy, Mike Truran, Roger Turner and John Appleyard, this excellent tournament attracted 26 young players in what was for the majority, their first championships outside school.



Alan's organisation ensured that this tournament ran really smoothly and his essential rules of the opening helped many players develop their chess skills.

I was thrilled to be asked to help out with the coaching and I'm sure I was able to impart some wisdom. There were certainly some impressive games played and the tactics and careful use of time improved massively throughout the day.



Results

1st James Marais (on tiebreak)

2nd David Sterrie

3rd= Steffan Allen, Myles Langley

Controller's prize: Matthew Lock



I would certainly recommend that people keep an eye out for the next Witney tournament and attend if at all possible. The tournament was generously sponsored by Weston Murray Moore – a firm of independent financial advisers:

<http://www.wmm.co.uk> and

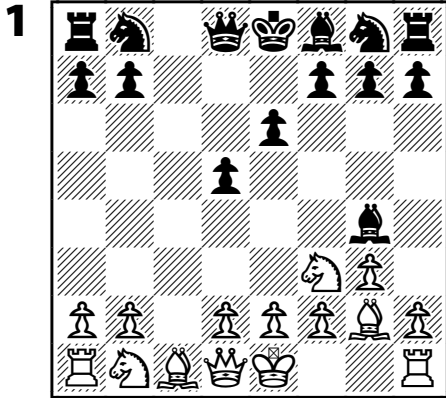
Systems and Solutions – a computer shop in Witney:

<http://www.systems-and-solutions.co.uk>

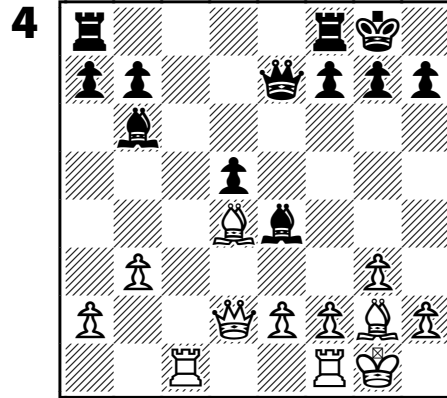
Claire Summerscale

CHESS QUIZ PAGE

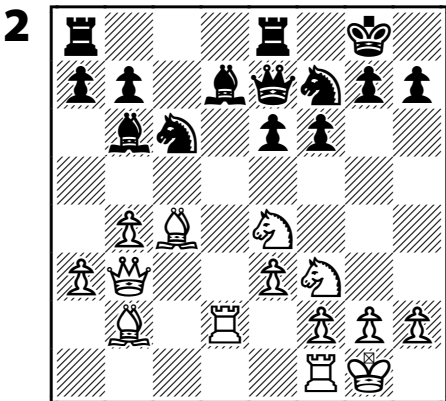
Find the best win!



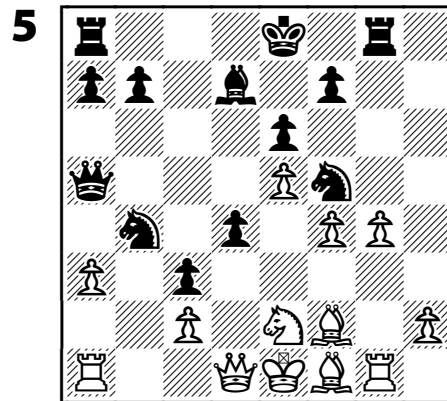
White to move and win.



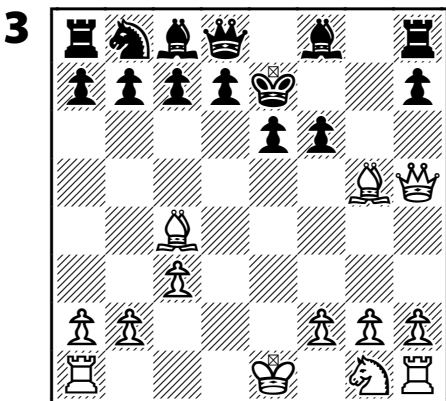
Black to move and win.



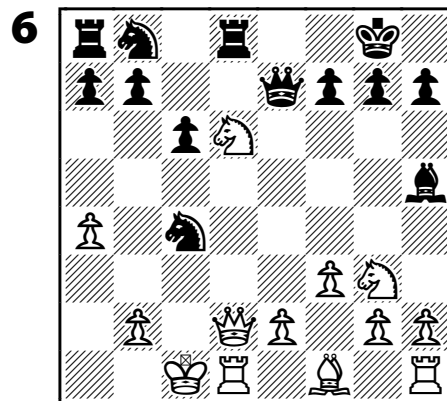
White to move and win.



Black to move and win.



White to move and win.



White to move and win.



by Andrew Martin

ENTER THE DRAGON

**Sergey Karjakin (2560) -
A Romero Holmes (2540)
[B75]**

It, Pamplona SPAIN, 2003

Many juniors play the Sicilian Dragon. Here's a thought-provoking recent game in one of the modern main lines which suggests a new way for Black.

1.e4 c5 2.♘f3 d6 3.d4 cxd4 4.♘xd4 ♗f6 5.♘c3 g6 6.♙e3 ♙g7 7.f3 a6!?

A hybrid of the Najdorf and the Dragon. Basically, Black is waiting in the centre with his King until White clarifies what he is doing. He will drum up immediate Q-side counterplay and try to frustrate any routine automatic K-side attacking ambitions that White might be harbouring.

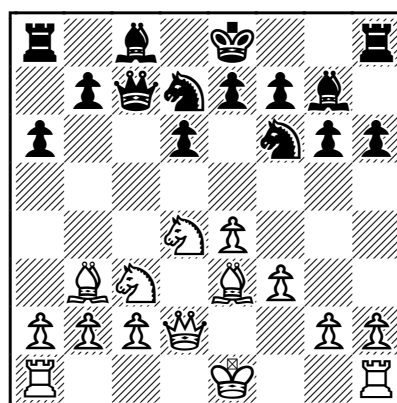
8.♙d2 ♘bd7

Naturally, Black waits with ...b7-b5 until White either plays Bc4 or castles long.

9.♙c4

9.g4 b5 10.g5 ♘h5 11.a4 is a more positional approach. Despite White's success in the following game, it looks ambitious: 11...bxa4 (11...b4 12.♘d5±) 12.♖xa4 Bauer,C-Lopez Martinez,J/France 2002 and now I think that 12...0-0! is right: 13.♘d5 (13.♘c6 ♗e5! 14.♘xe5 ♙xe5 15.f4 ♙g7 16.♙e2 ♚d7! 17.♖c4 (17.♙xh5 ♙xc3) 17...♚h3 18.♘d5 ♗g3∞) 13...♙b7 14.♖b4 ♖b8 15.♙xa6 ♙xa6 16.♘c6 ♖xb4! 17.♘xd8 (17.♚xb4 ♚a8 18.♘cxe7+ ♗h8 19.♚xd6 ♗e5→) 17...♖xb2 18.♘xe7+ ♗h8 19.♙f2 ♖xd8∞; Meanwhile 9.a4 0-0 10.h4 h5 11.0-0-0?! does not feel right; a judgement confirmed by the following game : 11...♘e5 12.♙g5 ♙d7 13.♙e2 ♖c8 14.♘b3 ♙e6 15.♘d5 ♙xd5 16.exd5 ♗c4 17.♙xc4 ♖xc4 18.a5 ♚d7 19.♚d3 ♖fc8 20.♖d2 ♖b4 21.♖e1 ♖b5 22.♙xf6 ♙xf6 23.♖e4 b6∓ Hynes,A-Ward,C/West Bromwich 2004 Combining a2-a4 and 0-0-0 is an uneasy mix for White!

9...♚c7 10.♙b3 h6!?

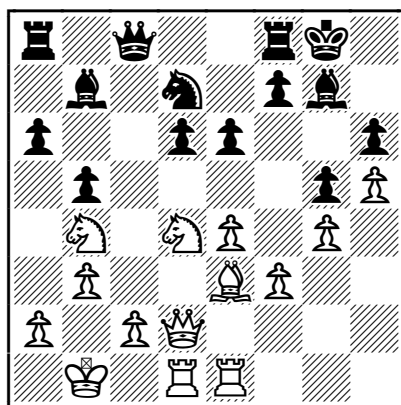


A move which cannot be discounted, however odd it may look. Black simply stops Bxh6 and will get on with his Q-side play as necessary. I'm coming round to the conclusion that this is Black's best

chance in the “Dragondorf,” but he must be very accurate.

11.0-0-0 ♖b6?!N

11...b5! 12.♖he1 ♕b7 13.♔b1 ♘b6 is an improved way of proceeding and in Forster–Cordara Ticino Open 1994, White should not have gained any advantage after 14.g4 ♘c4 15.♙xc4 ♗xc4 16.h4 ♘d7 (16...♖c8! 17.g5 hxg5 18.hxg5 ♘d7 19.♖h1 ♖xh1 20.♖xh1 b4 with sufficient counterplay.) 17.h5 g5 18.♘d5 e6! 19.b3 ♗c8 20.♘b4 0-0



is very unclear.

12.e5!

I am sure that Romero Holmes missed this move. White sets up threats down the d-file.

12...♘fd7

If 12...dxe5 13.♘db5 axb5 14.♘xb5+-

13.exd6 ♗xd6 14.♖he1

14.♘e4 ♗c7 15.♖he1±

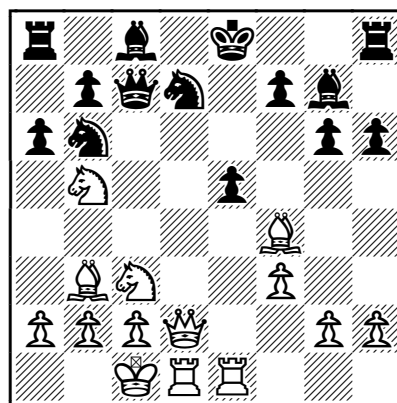
14...♗c7

14...0-0 15.♙xh6

15.♙f4

Missing the crushing 15.♘db5! axb5 16.♙xb6 ♗xb6 (16...♘xb6 17.♘xb5 ♗d7 18.♗f4+-) 17.♖xe7+!

15...e5 16.♘db5



16...axb5 17.♘xb5 ♗c6 18.♘d6+ ♔f8

18...♔e7! however risky, was necessary, and then 19.♘xf7 ♘c4 20.♙xc4 ♗xc4 21.♘xh8 ♙xh8∞ leads to a very messy situation.

19.♘xf7 ♘c5?

19...♘c4 20.♙xc4 ♗xc4 21.♘xh8 ♖xa2 22.♘xg6+ ♔f7 23.♗d6!! ♖a1+ 24.♔d2 ♖a6 gives Black a sporting chance to hang on.

20.♗d8+ ♗e8 21.♗xe8+ ♔xe8

22.♘xh8 ♘xb3+ 23.axb3 ♙xh8

24.♙xe5 ♙xe5 25.♖xe5+ ♔f7

26.♖d4±

It's impossible for Black to muster any realistic chances against White's rock solid position and three extra pawns.

26...♘d7 27.♖f4+ ♘f6 28.♖a4 ♖b8

29.♖ea5 b5 30.♖a8 ♖b6 31.♖4a7+

♙d7 32.♖a6 ♖xa6 33.♖xa6 ♘d5

34.♔d2 ♘f4 35.g3 ♘e6 36.♔e3 h5

37.♖b6 ♔e7 38.b4 ♙e8 39.b3 ♘g7

40.c4 ♘f5+ 41.♔e4 ♘d6+ 42.♔e5

♘f7+ 43.♔d5 ♘g5 44.♖b7+ ♔f6

45.f4 ♘f3 46.cxb5 ♘xh2 47.b6 ♘f1

48.♖c7

With ...a6 and ...h6 Black walks a fine line in the New Dragon. Is the idea any good? Only time will tell. **1-0.**

S,Sathyandha - A,Pritchard

[B22]
British U14 Liverpool (1),
03.08.2008

1.e4 c5 2.c3 Nf6
3.e5 Nd5 4.d4
cxd4 5.Nf3 Nc6 6.Bc4 Nb6 7.Bb3
dxc3 8.Nxc3 e6 9.Ne4 Be7 10.Bf4
0-0 11.h4 Na5 12.Bc2 Nd5 13.Bg3
b6 14.Kf1 Ba6+ 15.Kg1 Rc8 16.a3
Qc7 17.Rc1 Nb3 18.Nf6+ Kh8
19.Nd4 Nxc1 20.Bxh7 Na2 21.Bc2 g6
22.h5 g5 23.Qd2 Rg8 24.Nxg8 Rxc8
25.Kh2 Nf4
26.Bb3 Bc4
27.Qc2 Rc8
28.Ra1 Bxb3
29.Qxc7 Rxc7
30.Nxb3 Nxh5
31.Rxa2 Nxg3
32.Kxg3 Kg7
33.Nd4 1/2-1/2

A,Pritchard
- A,Roy
[C10]

British U14
Liverpool (2),
03.08.2008

1.e4 e6 2.d4
d5 3.Nc3 dxe4
4.Nxe4 Nd7
5.Nf3 Ngf6
6.Bg5 Be7
7.Nxf6+ Nxf6 8.Bd3 c5 9.dxc5 Qa5+
10.c3 Qxc5 11.Be3 Qc7 12.Qd2 0-0
13.Bf4 Qd8 14.Qc2 Qb6 15.0-0 Bd7
16.Be3 Qc7 17.Qd2 Rfd8 18.Bf4 Qb6
19.Be3 Bc5 20.Bxc5 Qxc5 21.Qe2

b6 22.Rad1 Bc6 23.Bc2 Bd5 24.a3
Rd6 25.Rfe1
Rad8 26.Nd4
Bb7 27.Kh1 Qg5
28.f3 Qc5 29.Nb3
Qc7 30.Nd4 Qc5
31.Nb3 1/2-1/2

Games

of Abigail Pritchard

I,Iyengar - A,Pritchard

[A45]

British U14 Liverpool (3)

1.d4 Nf6 2.Bg5 e6 3.e4 Be7 4.Nd2
0-0 5.Bd3 d6 6.h3 Nbd7 7.Ngf3 h6
8.Be3 Nb6 9.0-0 Bd7 10.c4 c5 11.e5
dxe5 12.dxe5
Ne8 13.Ne4
Rc8 14.Qc2
Ba4 15.b3
Bc6 16.Rad1
Qc7 17.Qc1
Bxe4 18.Bxe4
f6 19.exf6
Bxf6 20.Rfe1
Qf7 21.Qa3
Bc3 22.Bxc5
Bxe1 23.Rxe1
Rxc5 24.Qxc5
Nf6 25.Qe3
Nxe4 26.Qxe4
Re8 27.Nd4
e5 28.f4 Rf8
29.fxe5 Qf2+
30.Kh2 Rf4
31.Qe2 Qxd4
32.e6 Rf8



33.e7 Re8 34.Qe6+ Kh8 35.Rf1 Nd7
36.Qe2 Qd6+ 37.g3 Rxe7 38.Qg2
Nf6 39.Rf2 Qe5 40.Rf3 Qh5 41.h4
Ng4+ 42.Kh3 Nf6 43.g4 Qe5 44.Rf5
Qe4 0-1

A,Pritchard - A,Krishnan

[B18]

British U14 Liverpool (4)

1.e4 c6 2.d4 d5 3.Nd2 dxe4 4.Nxe4 Bf5 5.Ng3 Bg6 6.Nf3 h6 7.Bc4 Nd7 8.0-0 Qc7 9.Be3 Ngf6 10.Qd2 e6 11.Bf4 Bd6 12.Bxd6 Qxd6 13.Rad1 0-0-0 14.c3 Ne4 15.Nxe4 Bxe4 16.Qe3 Bxf3 17.Qxf3 Rdf8 18.Rfe1 Nb6 19.Bb3 g5 20.c4 c5 21.Qe3 cxd4 22.Rxd4 Qe7 23.Red1 Rd8 24.Qd2 Rxd4 25.Qxd4 Rd8 26.Qxd8+ Qxd8 27.Rxd8+ Kxd8 28.Kf1 Kc7 29.Ke2 Kd6 30.Kd3 Kc5 31.f3 a5 32.a3 f6 33.g3 Nd7 34.f4 b6 35.Ba2 Nf8 36.Kc3 gxf4 37.gxf4 Ng6 38.b4+ axb4+ 39.axb4+ Kd6 40.c5+ bxc5 41.bxc5+ Kxc5 42.Bxe6 Nxf4 43.Bf7 f5 44.Bg8 Kd6 45.Kd4 Ne6+ 46.Bxe6? Kxe6 47.Ke3 Ke5 48.Kf3 h5 49.h3 f4 50.Kf2 Ke4 51.Ke2 h4 52.Kf2 f3 53.Kf1 Kf5 54.Kf2 Kf4 55.Kf1 Kg3 56.Kg1 Kxh3 57.Kf2 Kg4 58.Kf1 h3 59.Kg1 Kf4 0-1

P,Butler - A,Pritchard

[B78]

British U14 Liverpool (5)

1.e4 c5 2.Nf3 d6 3.d4 cxd4 4.Nxd4 Nf6 5.Nc3 g6 6.Be3 Bg7 7.f3 0-0 8.Qd2 Nc6 9.Bc4 Bd7 10.0-0-0 Rc8 11.Bb3 Ne5 12.Bh6 Nc4 13.Bxc4 Rxc4 14.Bxg7 Kxg7 15.h4 Qa5 16.Kb1 Rfc8 17.Nb3 Qa6 18.h5 Rf8 19.hxg6 fxg6 20.Nd5 Rh8 21.Nxf6 exf6 22.Qxd6 Qxd6 23.Rxd6 Rc7 24.Rhd1 Bc8 25.Nd4 Re7 26.Nb5 a6 27.Nc3 Rhe8 28.Nd5 Rf7 29.c3 f5 30.Nb6 Be6 31.e5 f4 32.Nd5 Bf5+ 33.Kc1 g5 34.Re1 Be6 35.Nf6

Ree7 36.Ne4 h6 37.a3 Rf8 38.Nc5 Rfe8 39.Nxe6+ Rxe6 40.Rd7+ R8e7 41.Rxe7+ Rxe7 42.Kc2 Kg6 43.Kd3 Kf5 44.Kd4 h5 45.Kc5 g4? 46.Kd6 Re8 47.e6 Kf6 48.Kd7 Re7+ 49.Kd6 gxf3 50.gxf3 h4 51.Re4 Re8 52.Rxf4+ Kg7 53.Rxh4 Kf6 54.Rf4+ Kg7 55.Kd7 Ra8 56.e7 1-0

E,Hollingworth - A,Pritchard

[B53]

BWCA U14 York (4), 09.02.2008

1.e4 c5
 Sicilian Defence.
 2.Nf3 d6 3.d4 cxd4 4.Qxd4 (Nxd4) 4...Nc6
 Bringing the Queen out early allows it to be attacked.
 5.Bb5 a6 6.Bxc6+ bxc6 7.Be3 Nf6 8.Nc3 g6 9.Rd1 Bg7 10.h3 0-0 11.Qd2 Be6 12.Bh6 Rb8 13.Bxg7 Kxg7 14.b3 Qb6 15.0-0 Qb4 16.Rfe1 c5 17.Qd3 c4 18.Qd4 Rfc8 19.Nd5 Bxd5 20.exd5 cxb3 21.cxb3

White now has an isolated Queen's pawn.

21...Rc7 22.Qd3 Qb7 23.Re2 Rbc8 24.Rdd2

Leaves the back rank weak.
 24...Rc1+ 25.Kh2 (Rd1) 25...Ra1 26.Rc2 Rxc2 27.Rxc2 Qxd5 28.Qxa6 (Qxd5) 28...Qd1 29.Qe2 Qh1+ 30.Kg3 Nh5+ 31.Kh4 Qxg2 32.Qe4 Threatening Qd4+
 32...Rh1 33.Ng5 Rxh3+ 34.Nxh3 Qxe4+ 0-1





CHess CELEBRITIES from Issue #20

1. **David Bronstein**
2. **Alexandra Kosteniuk**
3. **Garry Kasparov**
4. **Luke McShane**
5. **Vladimir Kramnik**
6. **Susan Polgar & Mikhail Botvinnik**
7. **Henrique Mecking**
8. **Humphrey Bogart**
9. **Mikhail Tal**
10. **Bobby Fischer**

YOUR ENGLISH CHESS FEDERATION DIRECTORY

The readers of *The Right Move* are entitled to view the most up-to-date opening theory on ChessPublishing.com.

An excellent site, we recommend you visit it:

<http://www.chesspublishing.com/content/ecf/index.htm>

Remember your user ID:

rightmove

and password:

chesspublishing



Best Answers to Quizzes on page 12

1. 1. Qa4+
2. 1. Bxf6.
3. 1. Bxf6+ Kxf6 2. Qh4+
4. 1... Bxg2.
5. 1... d3.
6. 1. Ndf5 Nxd2 2. Nxe7+ Kf8 3. Rxd2

*Education never ends Watson. Life is a series of lessons with the greatest reserved for last.
Sherlock Holmes
The Red Circle*

English Chess Federation (ECF)

Junior Chess Magazine

The Right Move

Editor:

Andrew Martin

a.martin2007@yahoo.co.uk

ECF Director:

of Junior Chess & Education:

Peter Purland.

director.juniorchess@englishchess.org.uk

Proofers:

Bob Long, Andrew Martin.

Design/Layout: Bob Long.